

Keypoint

Protecting you at work



Footwear Catalogue

Sixton Technology & Performance





BOA® Say goodbye to untied shoes. BOA® Fit System precision engineered laces are contained inside the assembly, out of your way and out of machinery.



D3O® - Progressive cushioning & adaptive stability. The inserts in the D3O® midsole are specially designed to reduce the shocks suffered through the heel of the foot.



ESD - Designed & produced by using conductive materials which assure the perfect performance of electric characteristics throughout the whole lifespan of the footwear.



Green Solution - The comfort and the protective features of the RESOLUTE line, combined with the use of the best components made from more than 40% green raw materials.



Eco Friendly - Sixton Peak® has defined its commitment & attention to the environment, expressed into the daily economical management of materials and resources to reduce waste.



H.ABC - Hight Anti-Bacterial Component, achieves a new certified safety standard, ideal for ensuring the best protection in the workplace where HACCP standards must be met.



HDry® - An innovative lamination process is used to laminate a membrane directly onto the inner surface of the uppers and completely seals every potential point where water could get in.



EN ISO 20347-2012 - Occupational footwear with all the chemical-physical characteristics & comfort of Sixton footwear. Footwear without protective toecap & without anti-puncture midsole.



Lady - lady 'fit' with smaller sizes available.



Metal Free - Metal free for work in ESA areas.



Secosol - By collaborating with the orthopaedic laboratory "Hartmann" in Dillenburg, Maspica SpA also satisfies the safety requirements of orthopaedic footwear to produce Sixton® footwear, in accordance with the German standard DGUV 112-191.



SXT Pro-Tech - The microfiber/tissue on the toe cap is protected by pro-tech sxt to increase the resistance of the upper over time.



Vibram - a world-class leading producer of high performance rubber soles

Shoe Sizing Chart

UK	EU
3	35
3½	36
4½	37
5	38
6	37
6½	40
7	41
8	72
9	43
10	44
10½	45
11	46
12	47
13	48
14	19
15	50

RESOLUTE[®]

SYSTEM TECHNOLOGY

100%
DURABILITY



+50%
STABILITY

+30%
CUSHIONING



D3O[®] specialises in high-performance impact protection solutions. They are at the forefront in the development of highly efficient protective components for many sectors, which now includes safety footwear.

D3O[®]

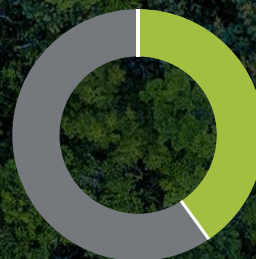
PROGRESSIVE CUSHIONING
AND ADAPTIVE STABILITY

RESOLUTE[®] GREEN



TODAY'S BEST GREEN SOLUTION

ECO-EVOLUTION OF THE RESOLUTE SYSTEM
TECHNOLOGY CONCEPT: THE COMFORT
AND THE PROTECTIVE FEATURES OF THE
RESOLUTE LINE, COMBINED WITH THE USE
OF THE BEST COMPONENTS MADE FROM
RECYCLED MATERIAL



>40%*
**GREEN RAW
MATERIALS**

*In compliance with the product certification of GREEN SOLUTION line. Safety footwear and removable insoles, with post-consumer and pre-consumer recycled content of no less than 40%. (ratio calculated on the surface of the upper

Resolute Green Styles



Tempra 43461-02



Line	Resolute
Type	Low Shoe
Upper	Recycled Digitex Hydro Airy, Microfibre Suede
Lining	3D Green Air 320 gr.
Insole	QRS02 Green
Sole	PU/PU ESD-Plus SRC
Toe Cap	Fibre Cap SXT
Mid-Sole	X-Method Perforation Resistant
Size	36-48
Weight	600 gr
Specification	S3 SRC ESD

Industries

- Aerospace
- Automotive
- Electronics
- Facilities
- General Handling
- Light Assembly
- Logistics
- Manufacturing
- Utilities



Tempra High 43480-02



Line	Resolute
Type	Ankle Boot
Upper	Recycled Digitex Hydro Airy, Microfibre Suede
Lining	3D Green Air 320 gr.
Insole	QRS02 Green
Sole	PU/PU ESD-Plus SRC
Toe Cap	Fibre Cap SXT
Mid-Sole	X-Method Perforation Resistant
Size	36-48
Weight	650 gr
Specification	S3 SRC ESD

Industries

- Aerospace
- Automotive
- Electronics
- Facilities
- General Handling
- Light Assembly
- Logistics
- Manufacturing
- Utilities



Shoes



Auckland 94378-00



Line	Skipper
Type	Low Shoe
Upper	Digitex Hydro Airy
Lining	Breezy 3D, Two-Layers Combination
Insole	Five 4 Fit
Sole	PU/PU ESD-Plus SRC
Toe Cap	Alu-SXT 2.0 Toe Cap
Mid-Sole	X-Method Perforation Resistant
Size	40-48
Weight	560 gr
Specification	S3 SRC ESD

Industries

- Aerospace
- Automotive
- Electronics
- Fabrication
- Facilities
- General Handling
- Glass
- Light Assembly
- Logistics
- Manufacturing
- Utilities



Cima 95398-02



Line	Skipper Lady
Type	Low Shoe
Upper	Digitex Hydro Airy, Microfibre Suede
Lining	Breezy 3D, Two-Layers Combination
Insole	Five 4 Fit Lady
Sole	PU Dual-Density SRC
Toe Cap	Alu SXT 2.0 Toe Cap
Mid-Sole	X-Method Perforation Resistant
Size	35-42
Weight	420 gr
Specification	S3 SRC ESD

Industries

- Aerospace
- Automotive
- Electronics
- Fabrication
- Facilities
- General Handling
- Glass
- Light Assembly
- Logistics
- Manufacturing
- Utilities



Swing 93343-00



Line	Ritmo Cross
Type	Low Shoe
Upper	Greased Nubuk Leather Hydrotech
Lining	3D Air Circulation 320 gr.
Insole	Five 4 Fit
Sole	PU/PU ESD-Plus SRC
Toe Cap	Alu-SXT 2.0 Toe Cap
Mid-Sole	X-Method Perforation Resistant
Size	35-48
Weight	600 gr
Specification	S3 SRC ESD

Industries

- Aerospace
- Agriculture
- Automotive
- DIY
- Electronics
- Fabrication
- Facilities
- Gardening
- General Handling
- Glass
- Light Assembly
- Logistics
- Manufacturing
- Utilities



Moka 95427-00



Line	Skipper Lady
Type	Low Shoe
Upper	Drummed Suede Leather Hydro
Lining	3D Air Circulation 320 gr.
Insole	Five 4 Fit Lady
Sole	PU Dual-Density SRC
Toe Cap	Alu SXT 2.0 Toe Cap
Mid-Sole	Zero(K) Anti-Perforation
Size	35-42
Weight	420 gr
Specification	S1P SRC

Industries

- Aerospace
- Automotive
- Facilities
- General Handling
- Glass
- Light Assembly
- Logistics
- Manufacturing
- Utilities





Blues 91186-10



Line	Ritmo
Type	Low Shoe
Upper	Drummed Leather Hydro
Lining	Resistex® Carbon
Insole	Five 4 Fit
Sole	PU / PU ESD-Plus SRC
Toe Cap	Alu-SXT 2.0 Toe Cap
Mid-Sole	Zero(K) Anti-Perforation
Size	35-48
Weight	540 gr
Specification	S3 SRC ESD

Industries

- Aerospace
- Automotive
- Electronics
- Fabrication
- Facilities
- General Handling
- Light Assembly
- Logistics
- Manufacturing
- Utilities



Cuban 91328-09



Line	Ritmo
Type	Low Shoe
Upper	Microfiber Suede
Lining	3D Air Circulation 320 gr.
Insole	Five 4 Fit
Sole	PU / PU ESD Plus SRC
Toe Cap	Alu-SXT 2.0 Aluminium Toe Cap
Mid-Sole	Zero(K) Anti-Perforation
Size	35-48
Weight	520 gr
Specification	S3 SRC ESD

Industries

- Aerospace
- Automotive
- Electronics
- Fabrication
- Facilities
- General Handling
- Light Assembly
- Logistics
- Manufacturing
- Utilities



Forza 43452-03



Line	Resolute
Type	Low Shoe
Upper	Microfibre Suede
Lining	3D Green Air 320 gr.
Insole	Qrs01
Sole	PU/PU ESD-Plus SRC
Toe Cap	Fibre Cap SXT
Mid-Sole	X-Method Perforation Resistant
Size	36-48
Weight	600 gr
Specification	S3 SRC ESD

Industries

- Aerospace
- Automotive
- DIY
- Electronics
- Facilities
- General Handling
- Light Assembly
- Logistics
- Manufacturing
- Utilities



Forza 43452-11



Line	Resolute
Type	Low Shoe
Upper	Microfibre Suede
Lining	3D Green Air 320 gr.
Insole	Qrs01
Sole	PU/PU ESD-Plus SRC
Toe Cap	Fibre Cap SXT
Mid-Sole	X-Method Perforation Resistant
Size	36-48
Weight	600 gr
Specification	S3 SRC ESD

Industries

- Aerospace
- Automotive
- DIY
- Electronics
- Facilities
- General Handling
- Light Assembly
- Logistics
- Manufacturing
- Utilities





SAC
System of Active Control

LADY

Windex 95406-00



Line	Skipper Lady
Type	Low Shoe
Upper	Grain Leather Hydro
Lining	3D Air Circulation 320 gr.
Insole	Five 4 Fit Lady
Sole	PU Dual-Density SRC
Toe Cap	Alu SXT 2.0 Toe Cap
Mid-Sole	X-Method Perforation Resistant
Size	35-42
Weight	420 gr
Specification	S3 SRC ESD

Industries

- Aerospace
- Automotive
- Electronics
- Fabrication
- Facilities
- General Handling
- Glass
- Light Assembly
- Logistics
- Manufacturing
- Utilities



Ortles 30335-00



Line	Scout
Type	Low Shoe
Upper	Microfiber Suede
Lining	3D Air Circulation 320 gr.
Insole	QRS01
Sole	PU-Rubber Vibram® - Fire & Ice
Toe Cap	Alu SXT 2.0 Toe Cap
Mid-Sole	X-Method Perforation Resistant
Size	36-50
Weight	680 gr
Specification	S3 HRO HI SRC

Industries

- Agriculture
- Construction
- Fabrication
- Garden
- Manufacturing



Brescia 82296-05



Line	Urban
Type	Low Shoe
Upper	Drummed Leather Hydro
Lining	3D Air Circulation 320 gr.
Insole	Blow-fit 2.0
Sole	PU / PU ESD-Plus SRC
Toe Cap	CTC- Composite Toe Cap
Mid-Sole	Zero(K) Perforation Resistant
Size	36-48
Weight	610 gr
Specification	S3 SRC ESD

Industries

- Aerospace
- Automotive
- Electronics
- Fabrication
- Facilities
- General Handling
- Glass
- Light Assembly
- Logistics
- Manufacturing
- Utilities



Boots



Auckland High 94405-00



Line	Skipper
Type	Ankle Boot
Upper	Digitex Hydro Airy
Lining	Breezy 3D, Two-Layers Combination
Insole	Five 4 Fit
Sole	PU/PU ESD-Plus SRC
Toe Cap	Alu-SXT 2.0 Toe Cap
Mid-Sole	X-Method Perforation Resistant
Size	38-48
Weight	595 gr
Specification	S3 SRC ESD

Industries

- Aerospace
- Automotive
- Electronics
- Fabrication
- Facilities
- General Handling
- Glass
- Light Assembly
- Logistics
- Manufacturing
- Utilities



Sound 93339-00



Line	Ritmo Cross
Type	Ankle Boot
Upper	Greased Nubuk Leather Hydrotech
Lining	3D Air Circulation 320 gr.
Insole	Five 4 Fit
Sole	PU/PU ESD-Plus SRC
Toe Cap	Alu-SXT 2.0 Toe Cap
Mid-Sole	X-Method Perforation Resistant
Size	35-48
Weight	640 gr
Specification	S3 SRC ESD

Industries

- Aerospace
- Agriculture
- Automotive
- DIY
- Electronics
- Fabrication
- Facilities
- Gardening
- General Handling
- Glass
- Light Assembly
- Logistics
- Manufacturing
- Utilities



Corvara 81087-06



Line	Endurance
Type	Ankle Boot
Upper	Greased Nubuk Leather Hydrotech
Lining	3D Air Circulation
Insole	Blowfit
Sole	PU Dual Density SRC
Toe Cap	CTC Composite Toe Cap
Mid-Sole	Zero(K) Anti-Perforation
Size	36-48
Weight	715 gr
Specification	S3 SRC

Industries

- Agriculture
- Construction
- Heavy Engineering
- Gardening
- General Handling
- Logistics
- Manufacturing
- Utilities



Labrador 81152-00



Line	Endurance
Type	Ankle Boot
Upper	Greased Nubuk Leather Hydro
Lining	DualMicro
Insole	Blowfit
Sole	PU Dual-Density SRC
Toe Cap	CTC Composite Toe Cap
Mid-Sole	Zero(K) Anti-Perforation
Size	36-48
Weight	740 gr
Specification	S3 SRC

Industries

- Agriculture
- Construction
- Heavy Engineering
- Gardening
- General Handling
- Logistics
- Manufacturing
- Utilities





fibercap ext

sixton^{peak}

D30

dynamic HC control

Forza High 43469-06



Line	Resolute
Type	Ankle Boot
Upper	Microfibre Suede
Lining	3D Green Air 320 gr.
Insole	Qrs01
Sole	PU/PU ESD-Plus SRC
Toe Cap	Fibre Cap SXT
Mid-Sole	X-Method Perforation Resistant
Size	36-48
Weight	650 gr
Specification	S3 SRC ESD

Industries

- Aerospace
- Automotive
- Electronics
- Facilities
- General Handling
- Light Assembly
- Logistics
- Manufacturing
- Utilities



Scatto High BOA® 43459-01



Line	Resolute
Type	Ankle Boot
Upper	Microfibre Suede
Lining	3D Green Air 320 gr.
Insole	Qrs01
Sole	PU/PU ESD-Plus SRC
Toe Cap	Fibre Cap SXT
Mid-Sole	X-Method Perforation Resistant
Size	36-48
Weight	660 gr
Specification	S3 SRC ESD

Industries

- Aerospace
- Automotive
- Electronics
- Facilities
- General Handling
- Light Assembly
- Logistics
- Manufacturing
- Utilities



Stelvio Black 80087-00



Line	Atlantida
Type	Ankle Boot
Upper	Greased Nubuk Leather Hydrotech
Lining	3D Air Circulation
Insole	Blowfit
Sole	PU/Rubber Vibram®
Toe Cap	CTC Composite Toe Cap
Mid-Sole	Zero(K) Anti-Perforation
Size	38-48
Weight	765 gr
Specification	S3 HRO HI SRC

Industries

- Agriculture
- Construction
- Heavy Engineering
- Logistics
- Offshore
- Quarries/Mining
- Rail
- Utilities
- Wind Energy



Stelvio Brown 80087-01



Line	Atlantida
Type	Ankle Boot
Upper	Greased Nubuk Leather Hydrotech
Lining	3D Air Circulation
Insole	Blowfit
Sole	PU/Rubber Vibram®
Toe Cap	CTC Composite Toe Cap
Mid-Sole	Zero(K) Anti-Perforation
Size	38-48
Weight	765 gr
Specification	S3 HRO HI SRC

Industries

- Agriculture
- Construction
- Heavy Engineering
- Logistics
- Offshore
- Quarries/Mining
- Rail
- Utilities
- Wind Energy





Tonale 30329-02



Line	Scout
Type	Ankle Boot
Upper	Greased Nubuk Dakar Leather
Lining	3D Air Circulation 320 gr.
Insole	QRS01
Sole	PU-Rubber Vibram® - Fire & Ice
Toe Cap	Alu SXT 2.0 Toe Cap
Mid-Sole	X-Method Perforation Resistant
Size	36-50
Weight	735 gr
Specification	S3 HRO HI SRC

Industries

- Agriculture
- Construction
- Fabrication
- Garden
- Manufacturing



Montana 81156-00



Line	Endurance
Type	Rigger
Upper	Full Grain-Anilina Leather-Hydro
Lining	-
Insole	Dual Insulation
Sole	PU Dual-Density SRC
Toe Cap	CTC Composite Toe Cap
Mid-Sole	Zero(K) Anti-Perforation
Size	36-48
Weight	710 gr
Specification	S3 SRC

Industries

- Agriculture
- Construction
- Heavy Engineering
- Garden
- General Handling
- Oil & Gas
- Rail
- Utilities



Dealer Black 10349-00



Line	Touring
Type	Slip-on Ankle Boot
Upper	Greased Nubuk Leather Hydrotech
Lining	3D Air Circulation
Insole	Blowfit 2.0
Sole	PU Dual Density SRC
Toe Cap	CTC Composite Toe Cap
Mid-Sole	X-Method Perforation Resistant
Size	36-48
Weight	620 gr
Specification	S3 SRC

Industries

- Agriculture
- Construction
- Fabrication
- Facilities
- Heavy Engineering
- Logistics
- Manufacturing
- Utilities



Dealer Brown 10349-01



Line	Touring
Type	Slip-on Ankle Boot
Upper	Greased Nubuk Leather Hydrotech
Lining	3D Air Circulation
Insole	Blowfit 2.0
Sole	PU Dual Density SRC
Toe Cap	CTC Composite Toe Cap
Mid-Sole	X-Method Perforation Resistant
Size	36-48
Weight	620 gr
Specification	S3 SRC

Industries

- Agriculture
- Construction
- Fabrication
- Facilities
- Heavy Engineering
- Logistics
- Manufacturing
- Utilities



LADY

Windex High 95414-00



Line	Skipper Lady
Type	Ankle Boot
Upper	Grain Leather Hydro
Lining	3D Air Circulation 320 gr.
Insole	Five 4 Fit Lady
Sole	PU Dual-Density SRC
Toe Cap	Alu SXT 2.0 Toe Cap
Mid-Sole	X-Method Perforation Resistant
Size	35-42
Weight	430 gr
Specification	S3 SRC ESD

Industries

- Aerospace
- Automotive
- Electronics
- Fabrication
- Facilities
- General Handling
- Glass
- Light Assembly
- Logistics
- Manufacturing
- Utilities



Belluno 82295-05



Line	Urban
Type	Ankle Boot
Upper	Drummed Leather Hydro
Lining	3D Air Circulation 320 gr.
Insole	Blow-fit 2.0
Sole	PU / PU ESD-plus SRC
Toe Cap	CTC- Composite Toe Cap
Mid-Sole	Zero(K) Perforation Resistant
Size	36-48
Weight	650 gr
Specification	S3 SRC

Industries

- Agriculture
- Construction
- Fabrication
- Garden
- Manufacturing



Vega 52045-02



Line	Horizon
Type	Ankle Boot
Upper	Pigmented Leather-Hydro
Lining	3D Air Circulation 320 gr.
Insole	Basic
Sole	PU Dual-Density SRC
Toe Cap	Steel Toe Cap
Mid-Sole	Steel Plate
Size	36-48
Weight	680 gr
Specification	S3 SRC

Industries

- Agriculture
- Construction
- Fabrication
- Garden
- Manufacturing

Illinois 52023-15



Line	Horizon
Type	Ankle Boot
Upper	Full Grain Leather Hydrotech
Lining	3D Air Circulation
Insole	Climaction-Fit 337
Sole	PU Dual Density SRC
Toe Cap	Steel Toe Cap
Mid-Sole	Steel Midsole
Size	36-48
Weight	700 gr
Specification	S3 SRC

Industries

- Aerospace
- Automotive
- Electronics
- Fabrication
- Facilities
- Light Assembly
- Logistics
- Manufacturing



HDry Boots



HDry® further develops '3D' lamination technology for absolutely waterproof, highly breathable and comfortable footwear. Guaranteed.

HDry® compound is made of a polyurethane ester-based waterproof/breathable membrane combined with thin polyester knit. Material saving and lightness are among the greatest benefits. HDry® is PTFE-free and no perfluorinated compounds (PFCs, PFOS, PFOA etc.) are used during its production.

HDry® does not contain any substance of the REACH –ECHA list. All HDry membranes are tested for harmful substances and are OEKO-TEX STANDARD 100 certified.



Features & Benefits

It leaves no space between the upper and the membrane and does not allow water to penetrate into the shoe. There is therefore no increase in weight and the footwear dries faster.

HDry
WATERPROOF BREATHABLE®

HDry® Technology keeps water out...



while still being breathable.



Stelvio HDry® 88087-17



Line	Polar
Type	Ankle Boot
Upper	Greased Nubuk Leather Hydrotech
Lining	3D Air Circulation
Insole	Blowfit 2.0
Sole	PU/Rubber Vibram®
Toe Cap	CTC Composite Toe Cap
Mid-Sole	X-Method Perforation Resistant
Size	38-48
Weight	865 gr
Specification	S3 HRO HI WR SRC

Industries

- Agriculture
- Construction
- Fabrication
- Fisheries
- Gardening
- Heavy Engineering
- Offshore
- Oil & Gas
- Quarries & Mining
- Rail
- Shipping & Ports
- Wind Energy



Corvara HDry® 81087-15



Line	Endurance
Type	Ankle Boot
Upper	Greased Nubuk Leather Hydro
Lining	3D Air Circulation 320 gr.
Insole	Blow-fit 2.0
Sole	PU Dual-Density SRC
Toe Cap	CTC- Composite Toe Cap
Mid-Sole	Zero(K) Perforation Resistant
Size	36-48
Weight	710 gr
Specification	S3 WR SRC

Industries

- Agriculture
- Construction
- Fabrication
- Fisheries
- Gardening
- Heavy Engineering
- Offshore
- Oil & Gas
- Quarries & Mining
- Rail
- Shipping & Ports
- Wind Energy





Avalon HDry® 88056-05

Avalon HDry® 88056-05



Line	Polar
Type	Half Knee Boot
Upper	Microfiber
Lining	3D Air Circulation
Insole	Air-Fit
Sole	PU/Rubber Vibram® - HRO SRC
Toe Cap	CTC Composite Toe Cap
Mid-Sole	Zero(K) Anti-Perforation
Size	38-48
Weight	860 gr
Specification	S3 HRO HI WR SRC

Industries

- Agriculture
- Construction
- Fabrication
- Fisheries
- Gardening
- Heavy Engineering
- Offshore
- Oil & Gas
- Quarries & Mining
- Rail
- Shipping & Ports
- Wind Energy



Adventure HDry® 88039-00



Line	Polar
Type	Ankle Boot
Upper	Microfiber
Lining	3D Air Circulation
Insole	Air-Fit
Sole	PU/Rubber Vibram® - HRO SRC
Toe Cap	CTC Composite Toe Cap
Mid-Sole	Zero(K) Anti-Perforation
Size	38-48
Weight	780 gr
Specification	S3 HRO HI WR SRC

Industries

- Agriculture
- Construction
- Fabrication
- Fisheries
- Gardening
- Heavy Engineering
- Offshore
- Oil & Gas
- Quarries & Mining
- Rail
- Shipping & Ports
- Wind Energy





Montana HDry® 81156-23



Line	Endurance
Type	Rigger
Upper	Greased Nubuk Leather Hydrotech
Lining	Genuine Wool Polar
Insole	Dual Insulation
Sole	PU/Dual Density SRC
Toe Cap	CTC Composite Toe Cap
Mid-Sole	Zero(K) Anti-Perforation
Size	36-48
Weight	850 gr
Specification	S3 WR CI SRC

Industries

- Agriculture
- Construction
- Heavy Engineering
- Offshore
- Quarries/Mining
- Rail
- Utilities
- Wind Energy



Empire HDry® 88169-00



Line	Polar
Type	Half Knee Boot
Upper	Full Grain-Anilina Leather-Hydro
Lining	3D Air Circulation
Insole	Dual Insulation
Sole	PU/Rubber Vibram® HRO SRC
Toe Cap	CTC Composite Toe Cap
Mid-Sole	Zero(K) Anti-Perforation
Size	38-48
Weight	850 gr
Specification	S3 HRO HI WR CI SRC

Industries

- Agriculture
- Construction
- Fabrication
- Fisheries
- Gardening
- Heavy Engineering
- Offshore
- Oil & Gas
- Quarries & Mining
- Rail
- Shipping & Ports
- Wind Energy



Ortisei BOA® 30437-00



Line	Scout
Type	Ankle Boot
Upper	Microfibre Suede
Lining	3D Green Air 320 gr.
Insole	Qrs01
Sole	PU-Rubber Vibram - Fire & Ice
Toe Cap	Alu-SXT 2.0 Toe Cap
Mid-Sole	X-Method Perforation Resistant
Size	36-50
Weight	780 gr
Specification	S3 HRO HI WR CI SRC

Industries

- Aerospace
- Automotive
- Electronics
- Facilities
- General Handling
- Light Assembly
- Logistics
- Manufacturing
- Utilities



Eldorado Arctic Grip 89117-15



Line	Polar
Type	Ankle Boot
Upper	PU Hydro Coated Leather
Lining	3D Air Circulation
Insole	Dual Insulation
Sole	PU/Rubber Vibram®- Arctic Grip
Toe Cap	CTC Composite Toe Cap
Mid-Sole	X-Method Perforation Resistant
Size	38-48
Weight	810 gr
Specification	S3 HRO HI WR CI SRC

Industries

- Agriculture
- Construction
- Fabrication
- Fisheries
- Gardening
- Heavy Engineering
- Offshore
- Oil & Gas
- Quarries & Mining
- Rail
- Shipping & Ports
- Wind Energy



Hygiene



Adria 94390-03



Line	Skipper
Type	Low Shoe
Upper	Microfiber X-Pro
Lining	Bacteriostatic Teklife 3D
Insole	Five 4 Fit
Sole	PU/PU Plus-ESD SRC
Toe Cap	Alu SXT 2.0 Toe Cap
Mid-Sole	None
Size	38-48
Weight	490 gr
Specification	S2 SRC

Industries

- DIY
- Electrical
- Facilities
- Food
- General Handling
- Logistics
- Pharmaceutical
- Utilities



Alba 95428-00



Line	Skipper Lady
Type	Low Shoe
Upper	Microfiber X-Pro
Lining	Bacteriostatic Teklife 3D
Insole	Five 4 Fit Lady
Sole	PU/PU Plus-ESD SRC
Toe Cap	Alu SXT 2.0 Toe Cap
Mid-Sole	None
Size	35-42
Weight	350 gr
Specification	S2 SRC

Industries

- DIY
- Electrical
- Facilities
- Food
- General Handling
- Logistics
- Pharmaceutical
- Utilities



Bergamo 86206-00



Line	Crystal
Type	Ankle Boot
Upper	Microfiber XTop
Lining	Bacteriostatic Teklife 3D
Insole	Flyfit
Sole	PU Dual Density SRC
Toe Cap	CTC Composite Toe Cap
Mid-Sole	None
Size	35-48
Weight	510 gr
Specification	S2 SRC

Industries

- DIY
- Facilities
- Food
- General Handling
- Logistics
- Pharmaceutical



Venezia 86203-00



Line	Crystal
Type	Slip-On Low Shoe
Upper	Microfiber X-Top
Lining	Bacteriostatic Teklife 3D
Insole	Flyfit
Sole	PU Dual Density SRC
Toe Cap	CTC Composite Toe Cap
Mid-Sole	None
Size	35-48
Weight	460 gr
Specification	S2 SRC

Industries

- DIY
- Facilities
- Food
- General Handling
- Logistics
- Pharmaceutical



Occupational



Auckland 98378-07



Line	Just Grip
Type	Low Shoe
Upper	Digitex Hydro Airy, Microfibre Suede
Lining	Breezy 3D, Two-Layers Combination
Insole	Five 4 Fit
Sole	PU-Rubber Vibram® Coltello Design
Toe Cap	Alu SXT 2.0 Toe Cap
Mid-Sole	X-Method Perforation Resistant
Size	38-48
Weight	560 gr
Specification	S3 HRO HI SRC ESD

Industries

- Aerospace
- Automotive
- DIY
- Electronics
- Facilities
- Fabrication
- Food
- General Handling
- Logistics
- Light Assembly
- Logistics
- Manufacturing
- Pharmaceutical
- Utilities



Boma 19401-11



Line	Just Grip Lady
Type	Low Shoe
Upper	Drummed Leather Hyrdro
Lining	3D Air Circulation 320 gr.
Insole	Five 4 Fit Lady
Sole	PU-Rubber Vibram® Coltello Design
Toe Cap	None
Mid-Sole	None
Size	35-42
Weight	400 gr
Specification	O2 FO HRO HI SRC

Industries

- Electrical
- Facilities
- Food
- Logistics
- Pharmaceutical



Randa 18387-11



Line	Just Grip
Type	Low Shoe
Upper	Drummed Leather Hyrdro
Lining	3D Air Circulation 320 gr.
Insole	Five 4 Fit
Sole	PU-Rubber Vibram® Coltello Design
Toe Cap	None
Mid-Sole	None
Size	38-48
Weight	510 gr
Specification	O2 FO HRO HI SRC

Industries

- Electrical
- Facilities
- Food
- Logistics
- Pharmaceutical



Cima 99398-07



Style	Just Grip Lady
Type	Low Shoe
Upper	Digitex Hydro Airy MicroFiber Suede
Lining	Breezy 3D
Insole	Five 4 Fit Lady
Sole	PU-Rubber Vibram® Coltello Design
Toe Cap	Alu SXT 2.0 Toe Cap
Mid-Sole	X-Method Perforation Resistant
Size	35-42
Weight	490 gr
Specification	S3 HRO HI SRC

Industries

- Aerospace
- Automotive
- DIY
- Electronics
- Facilities
- Fabrication
- Food
- General Handling
- Logistics
- Light Assembly
- Logistics
- Manufacturing
- Pharmaceutical
- Utilities



Gait Scanning

'Gait' is a person's pattern of walking. Walking involves balance and the coordination of muscles, propelling the body forward in a rhythm, called the 'stride'.

Through the combination of biomechanical assessment and a computerised gait scan, foot problems caused by an abnormal gait can easily be diagnosed.

How does a gait scan work?

The gait scan itself involves thousands of tiny sensors capturing the distribution of pressure throughout the sole of your foot each step you take. This gives a very accurate visual representation of the pressures under your feet during a dynamic or moving gait, providing correct and repeatable measurements of how your foot is functioning when you walk and not just when you are stand still which is the way feet are often assessed.

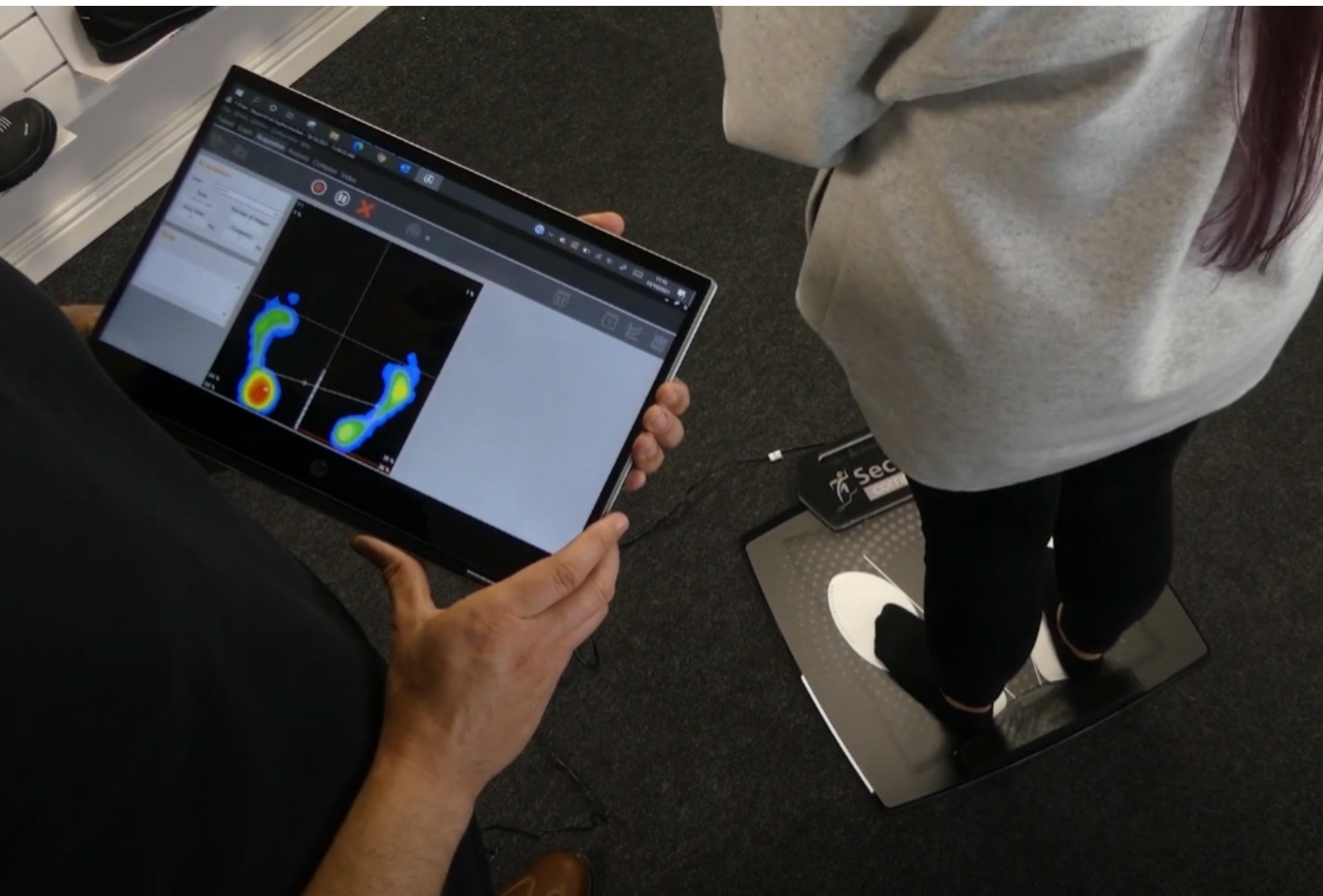
The Secosol+ scanning unit can also help identify whether custom orthotics are required. Sometimes an off-the-shelf solution isn't the best option for supporting your feet, lower limbs and back.

Why is a gait scan needed?

Your foot is in contact with the ground for about 0.8 of a second when walking and about 0.25 seconds when running. No practitioner (no matter how well trained) can provide a 100% accurate analysis of foot function with the naked eye in a quarter of a second.

Not everybody needs to have insoles put into their footwear and having a static scan done of your feet does not always highlight the more complex foot complaints and in some cases these scans can misrepresent the actual support your feet require.

Please click [HERE](#) to view our Footwear Scanner video.



Common Complaints

Why Is The Footwear We Choose So Important?

Think of shoes as the foundations of your body. If the foundations don't support you properly it puts more pressure on other areas of the body like your knees, hips, and lower back.

Wearing a shoe that is too big will cause us to walk in an unnatural and dysfunctional way. This can lead to serious foot problems.

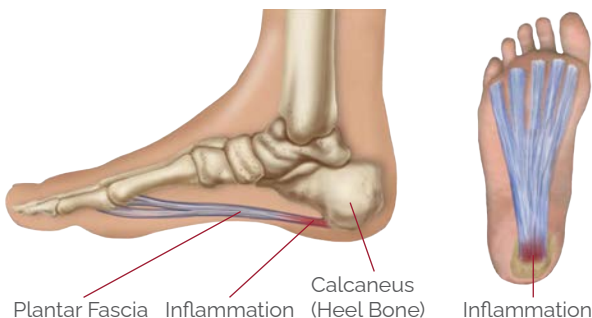
Foot pains are often unreported LTIs (lost time incidents) and cost £3.2bn to employers (2018/19). On average 8 days are taken off as a result of workplace injury (£960).

Wearing the correct footwear for you reduces the effects of: plantar fasciitis, fatigue, achilles tendonitis, pronation/supination instabilities and back & knee pain.

But what are these conditions?

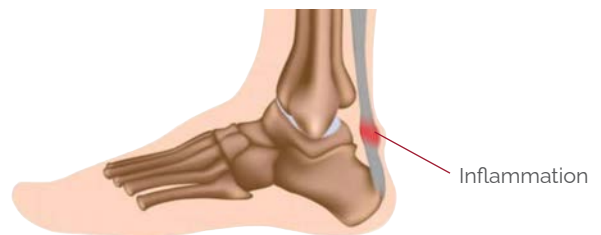
Plantar Fasciitis: the inflammation of a thick band of tissue that runs across the bottom of your foot and connects your heel bone to your toes (plantar fascia).

It is estimated that 10% of people will suffer from this complaint.



Tendonitis: when a tendon becomes inflamed after a tendon injury. It can cause joint pain, stiffness, and affect how a tendon moves.

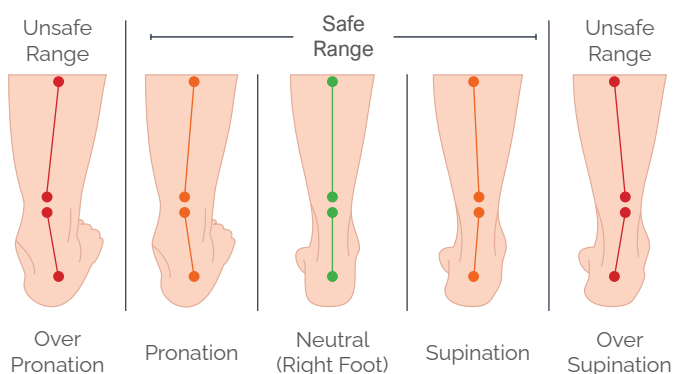
It is estimated that 18% of people will suffer from this complaint at some point.



Supination: when you walk, your weight tends to be more on the outside of your foot.

Pronation: when you walk, your weight tends to be more on the inside of your foot.

Only 30% of the population have a neutral foot.



Back and Knee Pain: can have many causes but can have the biggest effect on our body and how we conduct our day to day lives.

2.5m people suffer with back pain in the UK every day.

The three previous conditions can result in secondary pain in our knee or back due to misalignment of the ankle, knee and hips due to changing the way we walk to help relieve pain.



Contact Us

17-18 Keypoint Business Park
Rosemount Park Drive
Ballycoolin Road, D11
D11 K6NK

Tel: +353 (0) 1 885 30 30
Fax: +353 (0) 1 885 30 31

UK

www.keypoint-uk.co.uk
sales@keypoint-uk.co.uk

Ireland

www.keypoint.ie
sales@keypoint.ie

