

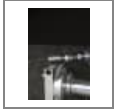
Data Sheet



HF 100 B Carbide burs



Properties: Cylindrical burr with end cut - Designation in accordance with DIN 8032: ZYAS Advantages: The end cut makes it suitable for blind holes and faces on inner contours



| Diameter in mm | Length in mm | Shaft diameter in mm | Height in mm | Cut | Max. RPM in rpm | structural shape | Shaft length in mm | Cat.number |
|----------------|--------------|----------------------|--------------|-------------------------|-----------------|----------------------|--------------------|------------|
| 3 | 38 | 3 | 14 | double serration | 100.000 | cylinder with endcut | 24 | 295483 |
| 6,3 | 55 | 3 | 12,7 | double serration | 65.000 | cylinder with endcut | 42,3 | 295507 |
| 6 | 50 | 6 | 18 | single serration | 65.000 | cylinder with endcut | 32 | 295522 |
| 6 | 50 | 6 | 18 | coarse single serration | 65.000 | cylinder with endcut | 32 | 295526 |
| 6 | 50 | 6 | 18 | double serration | 65.000 | cylinder with endcut | 32 | 295532 |
| 8 | 64 | 6 | 19 | double serration | 55.000 | cylinder with endcut | 45 | 295553 |
| 9,6 | 64 | 6 | 19 | coarse single serration | 55.000 | cylinder with endcut | 45 | 295564 |
| 9,6 | 64 | 6 | 19 | double serration | 55.000 | cylinder with endcut | 45 | 295569 |
| 12,7 | 64 | 6 | 19 | double serration | 35.000 | cylinder with endcut | 45 | 295595 |
| 12,7 | 70 | 6 | 25 | single serration | 35.000 | cylinder with endcut | 45 | 295603 |
| 12,7 | 70 | 6 | 25 | coarse single serration | 35.000 | cylinder with endcut | 45 | 295605 |
| 12,7 | 70 | 6 | 25 | double serration | 35.000 | cylinder with endcut | 45 | 295610 |
| 16 | 70 | 6 | 25 | double serration | 25.000 | cylinder with endcut | 45 | 295622 |
| 6 | 50 | 6 | 18 | Steel cut | 65.000 | cylinder with endcut | 32 | 334124 |
| 8 | 64 | 6 | 19 | Steel cut | 55.000 | cylinder with endcut | 45 | 334125 |

| | | | | | | | | |
|------|----|---|----|-----------|--------|----------------------|----|--------|
| 9,6 | 64 | 6 | 19 | Steel cut | 55.000 | cylinder with endcut | 45 | 334131 |
| 12,7 | 70 | 6 | 25 | Steel cut | 35.000 | cylinder with endcut | 45 | 334132 |